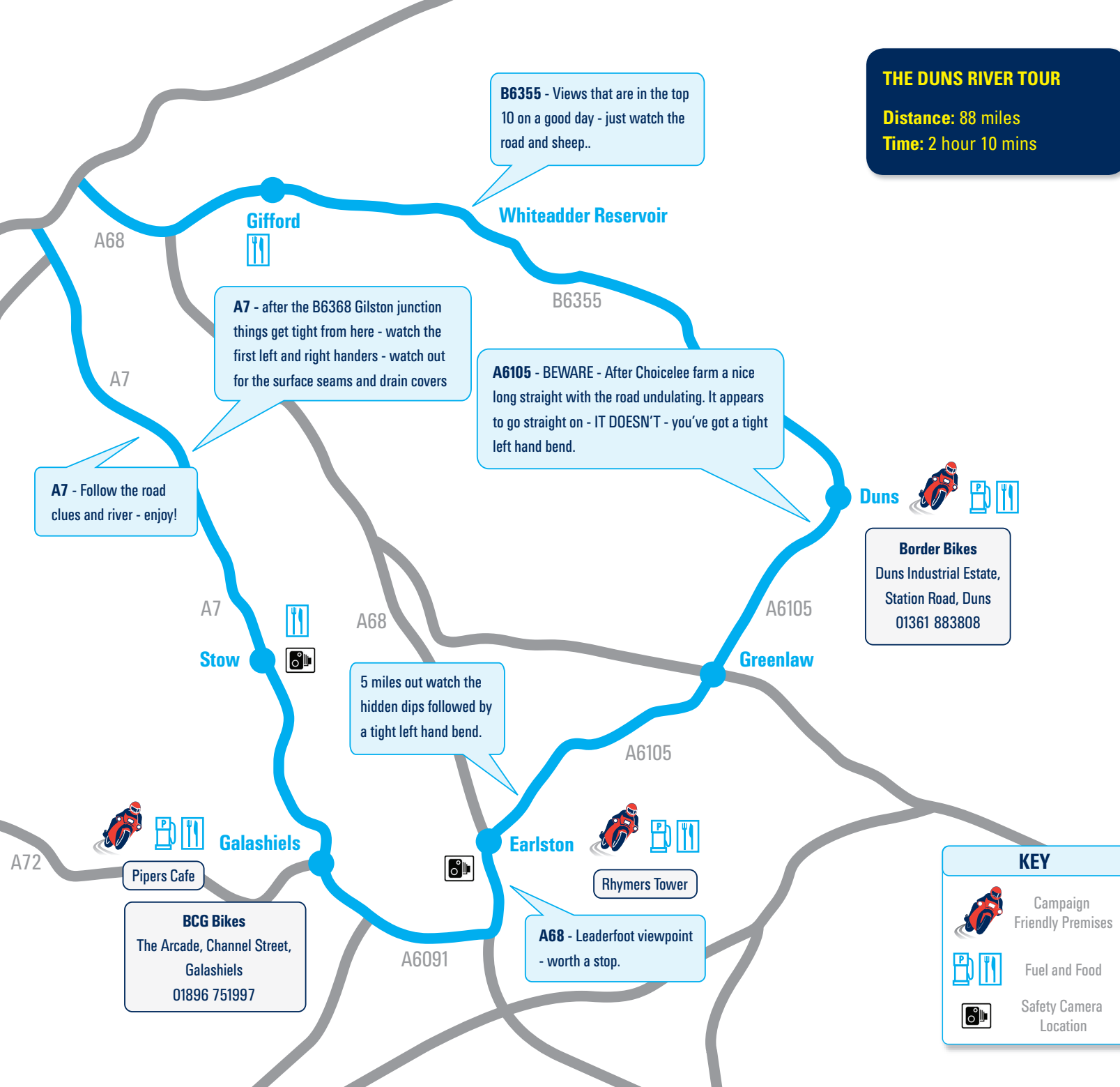


THE DUNS RIVER TOUR
Distance: 88 miles
Time: 2 hour 10 mins



B6355 - Views that are in the top 10 on a good day - just watch the road and sheep..

A7 - after the B6368 Gilston junction things get tight from here - watch the first left and right handers - watch out for the surface seams and drain covers

A6105 - BEWARE - After Choicelee farm a nice long straight with the road undulating. It appears to go straight on - IT DOESN'T - you've got a tight left hand bend.

A7 - Follow the road clues and river - enjoy!

5 miles out watch the hidden dips followed by a tight left hand bend.

A68 - Leaderfoot viewpoint - worth a stop.

BCG Bikes
 The Arcade, Channel Street,
 Galashiels
 01896 751997

Border Bikes
 Duns Industrial Estate,
 Station Road, Duns
 01361 883808

KEY	
	Campaign Friendly Premises
	Fuel and Food
	Safety Camera Location